

TECHNICAL BULLETIN NO. 20080801

August 1, 2008

SUBJECT Addition of Manual Range Option for SpecMaps

PRODUCT FAMILY SpecMaps

VERSIONS SpecMaps, SpecMaps Pro Turf

DETAILS

Both programs now allow the user to specify the data range in the chart legend. The benefit of the new manual-range option is that it allows different data sets to have the same relationship between parameter value and map color. This could be for individual sites sampled on different days or several sites sampled on the same day.

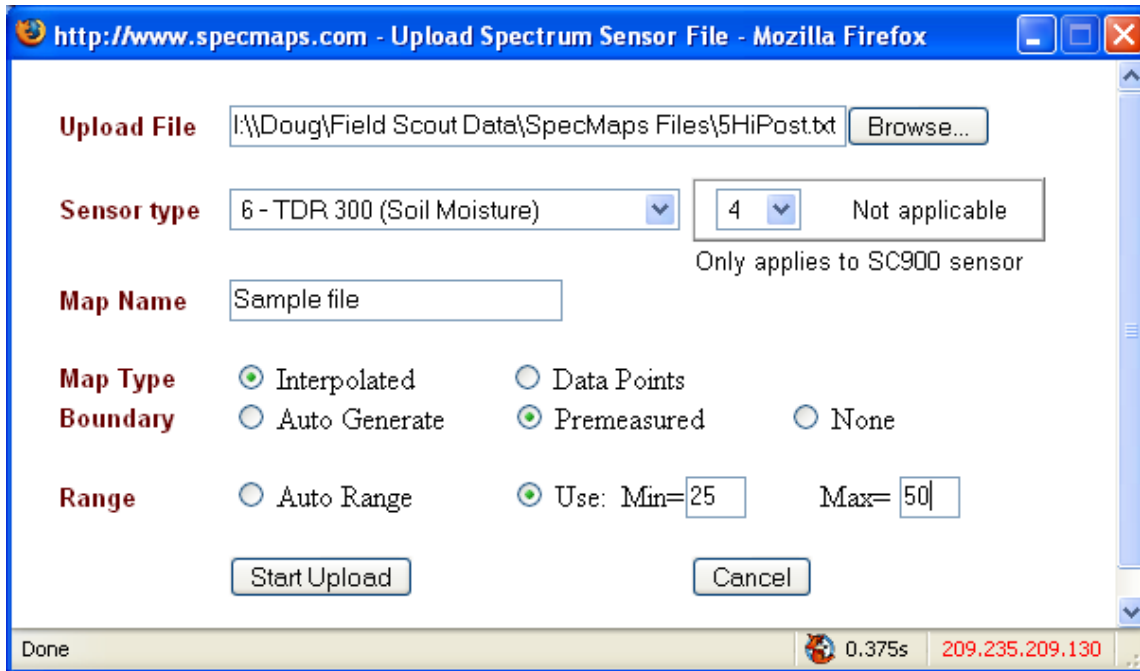


Figure 1. SpecMaps file upload screen.

The range is selected during the upload procedure (see fig. 1). The default is for the overall range to be calculated from the minimum and maximum values in the data set. To enter a data range, click the circle in the lower right and enter the minimum and maximum values. The eight legend ranges will be calculated from these values. Data values less than the minimum will get the same color as the lowest data range. Data values greater than the maximum will get the same color as the highest data range.

A comparison of a file uploaded with the auto range option and manual range option is shown below. In this case, the data range is from 10% to 38.5% (fig. 2). The manual range extends from 10 to 50% so there are 2 data ranges (40 – 45% and 45 – 50%) that have no data (fig. 3). Therefore, the contrast is slightly reduced. However, the contour features can be readily seen in both maps. However, using the manual range allows for a useful comparison of greens 1 and 3 (figures 3 and 4). From these two charts, it is easy to determine that green 3 is drier because they share the same data range.

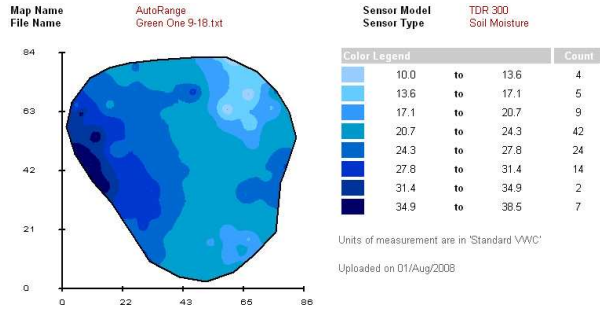


Figure 2. Green 1 with auto range option

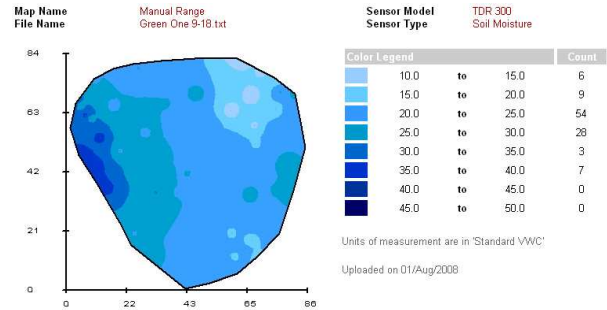


Figure 3. Green 1 with manual range option

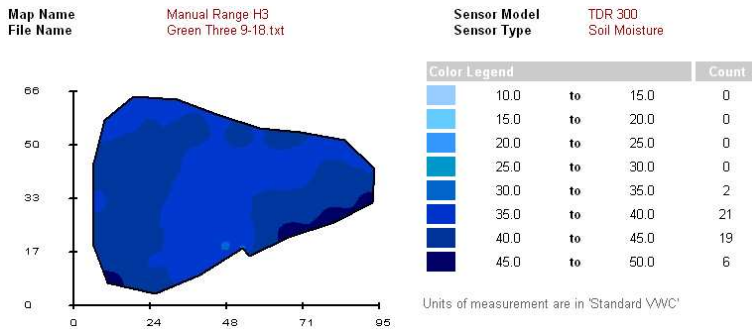


Figure 4. Green 3 with manual range set the same as green 1

Spectrum Technologies, Inc.
 12360 S. Industrial Drive East
 Plainfield, IL 60585
 toll free: 800.248.8873
 phone: 815.436.4440
 fax: 815.436.4460
 email: info@specmeters.com
 www.specmeters.com