

Weather Station LAN Connection

Start-Up Guide

Item #
3388LAN



Spectrum[®]
Technologies, Inc.

CONTENTS

Requirements	3
Configuring the Station	4
Configuring the LAN	6
Default Settings	5
Warranty	6

Spectrum[®] ***Technologies, Inc.***

SpecWare Software © 1997-2012 Spectrum Technologies, Inc.

For support, or to place an order, call:
Spectrum Technologies, Inc
12360 S. Industrial Dr. East
Plainfield, IL 60585
800-248-8873 or 815-436-4440
www.specmeters.com e-mail: info@specmeters.com

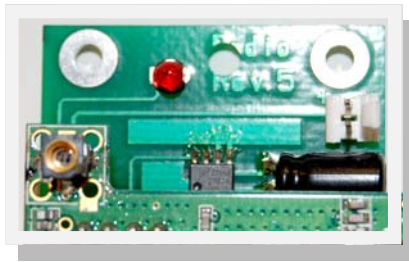
REQUIREMENTS

Hardware

- Full Weather Station (2900ET, 2700, 2550)
Firmware 7.0 or Above
- Mini Station (2475, 2450, 2425, 2400)
Firmware 3.0 or Above

Wireless Radios

- Remote radio on the weather station (3391W, 3391M, 3392W, or 3392) must be marked “Radio Rev 5”



•

If remote radio is item # 3393W all versions are compatible with the LAN connection



Software

- SpecWare 9 Pro is needed to view, download and transmit data to Spectrum Weather site.

You will need an Ethernet cable to set-up the LAN

CONFIGURING THE STATION

The LAN connection is designed for use with the WatchDog 2000 Series Full and Mini Weather Stations. It can be connected via our direct connect cable Item # 3660-75SP or the wireless radios Item # 3392B, 3392W, 3392M, 3391B, 3391W, 3391M, 3393B and/or 3393W.

If adding the LAN connection to an existing station or wireless radio, the station microcontroller and/remote radio may need to be upgraded to operate with the LAN connection.

SpecWare 9 Pro must be installed on your computer in order to perform the configurations. If you have not installed SpecWare, do so before continuing. Be sure to set key parameters, unit system (English/Metric), and the communications port in Specware (refer to page 5 of the SpecWare manual).

1. Connect the station to the PC using the 6ft (2m) gray direct-connect cable provided with SpecWare software.
2. Open SpecWare 9 Pro. Open the WatchDog Manager (click the toolbar button or the "WatchDog Manager" option in the Logger menu). Select "<Direct Connect 2000 Series>" and click "Properties".

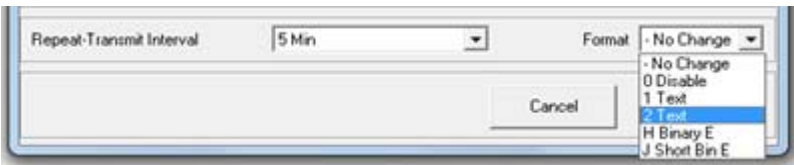
If requested, give the station a name (or approve the default). When the WatchDog Properties screen displays, set the configuration of your external sensors to match the ones you are using.

SpecWare allows you to specify both a logging interval and a data transmission interval. The "Data Collection Interval" specifies how often data is logged to the internal memory of the station. *This may or may not match the frequency you will be transmitting current conditions to the Internet.*

The “Repeat-Transmit Interval” is used to specify how often your station will send current conditions via the LAN connection. Note: that it only sends the current conditions—not the data logged since the last transmission.

Full Station

- Format “2 Text” should be set for Full Weather Stations (Figure 1).

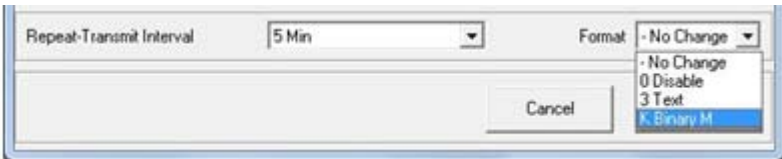


Mini Station

- Mini Stations have only a single “Repeat-” “Format” option, displaying either “K Binary M” (Figure 2) or “L Binary E” based on the English/Metric setting in Specware.

After all configuration options have been selected, click the “OK” button to write your configuration settings to the Station.

If the LAN connection is going to be used with a wireless radio follow the set-up directions from its manual.

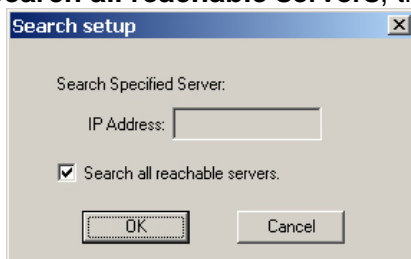


CONFIGURING THE LAN CONNECTION

- Connect an Ethernet cable to the LAN connection and router.
- Connect the power supply to the unit and apply power.

Light	Indication
Power	Red - Power is applied
Link	Yellow - 10BaseT Ethernet connection established Green - 100BaseTX Ethernet connection established
Ready	Flashing Green - System is ready

- Insert the software CD. It should auto start into the installation wizard. If not, double click on **My Computer** and CD Drive.
- Follow the on screen installation wizard to install the LAN connection software, after program installed remove the CD.
- Click on Start\Programs\B&B Electronics\Vlinx\ESPServer\Vlinx ESP Manager
- To manually initiate a search for servers, click on **Search Server** under the **Server** menu.
- It will provide two options for searching for servers on the network. Specify the IP address of the Serial Server or Search all reachable servers.
- Click on **Search all reachable servers**, then **OK**.



- The Searching windows will appear until all the active **Serial Servers** on the LAN are listed in the **Serial Server List** window.

Configuring the Server Properties

- To open the **Server Properties** window, highlight the **Serial Server** in the **Serial Server List** window, double-click to open
- Set the LAN connection as follow:

Setting	
Baud Rate	9600
Data/Stop bit	8-1
Parity	None
Serial Port	1
Protocol	TCP
Serial Timeout	0
Connection mode	Client (no HB)
TCP/UDP	83 (Full Weather Station) or 1009 (Mini Station)
Remote IP	66.29.148.16 (www.spectrumweather.com)

- Click **Update** and **Yes to Restart** your device.
- Once set the status should switch to **Connect**.

Server name	IP address	Protocol	Port	COM name	Status
Wireless Full	192.168.1.151	TCP	83	Not mapped	Connected

- Connect your wireless radio base/direct connect cable to the serial port.
- Contact Spectrum Technologies to set up an account on www.spectrumweather.com

WARRANTY

This product is warranted to be free from defects in material or workmanship for one year from the date of purchase. During the warranty period Spectrum will, at its option, either repair or replace products that prove to be defective. This warranty does not cover damage due to improper installation or use, lightning, negligence, accident, or unauthorized modifications, or to incidental or consequential damages beyond the Spectrum product. Before returning a failed unit, you must obtain a Returned Materials Authorization (RMA) from Spectrum. Spectrum is not responsible for any package that is returned without a valid RMA number or for the loss of the package by any shipping company.

Spectrum[®] ***Technologies, Inc.***

12360 S. Industrial Dr. E
Plainfield IL 60585
(800) 248-8873 or (815) 436-4440
Fax (815) 436-4460
E-Mail: info@specmeters.com
www.specmeters.com