

# Cover for Solar Power Package

Item 3999CS

## Placing the cover

To install the back cover, place it on the back of the solar panel as shown in figure 1. Ensure the gray cable is fed through the opening at the top edge of the cover.

## Attaching the clips

Note the five openings along the edge of the cover. The retaining clips are to be installed at these locations by securing the arrow end of the clip onto the cover and pressing down to snap into place. See figure 2.

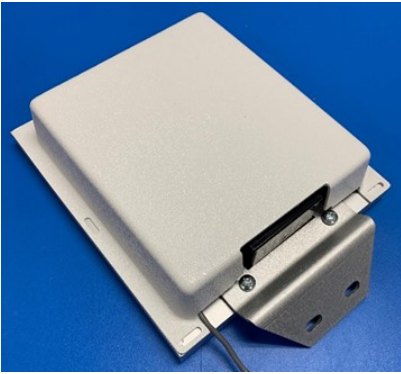


Figure 1.



Figure 2.

## Removing the clips

Use a flathead screwdriver. Insert the screwdriver under the edge of the clip on the front of the solar panel and twist. The clip will release and can be slid back and removed. See figure 3.

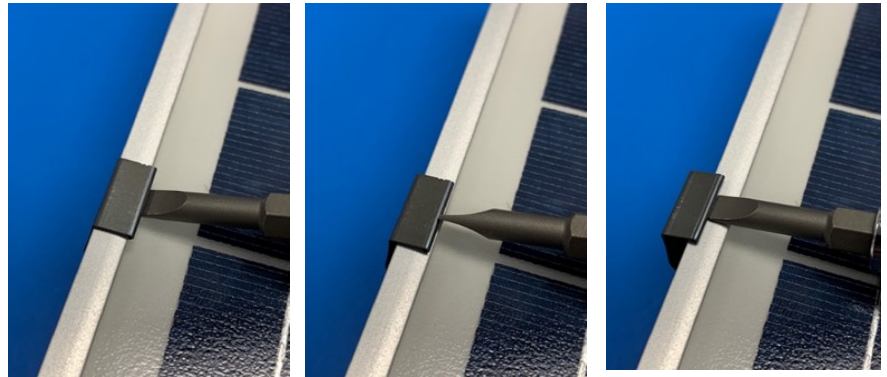


Figure 3.

## Specifications

**Dimensions** 9.75 x 8.75 x 2.00 inches (25.00 x 22.00 x 5.00 cm)

**Weight** 0.45 lbs (0.20 kg)

***Spectrum<sup>®</sup>***  
***Technologies, Inc.***

3600 Thayer Court  
Aurora, IL 60504  
(800) 248-8873 or (815) 436-4440  
Fax (815) 436-4460  
E-Mail: [Info@specmeters.com](mailto:Info@specmeters.com)  
[www.specmeters.com](http://www.specmeters.com)